



NEBULATECH BBS PRIVATE LIMITED

CIN No: U41001BR2025PTC076867

MEP DESIGN & DRAFTING SERVICE'S



**Contact Us Today
to Learn More!**

www.nebulatechbbspvtltd.com

ABOUT US

Our journey began in 2020, by a consortium of self-employed engineers and commercial graduates having professional aptitude, together as a dedicated team of passionate MEP, supply Erection, and commissioning of commercial, residential & Industrial projects, Our engineers operated under the name BBS MEP Consulting, serving a range of major clients across residential, commercial, and industrial projects.

With growing experience, client trust, and project scale, we came up with dedicated services for our customers who were quite satisfied with our optimum design and competitive pricing.

We took the next step in our journey, transforming our firm into a registered private limited company to deliver enhanced value, professionalism, and reliability.

In 2025, Nebulatech BBS Private Limited. was officially established, building on Five years of combined expertise in Mechanical, Electrical, Plumbing and Firefighting system design, drafting, and consulting. Our goal remains focused: to deliver efficient, code-safety compliant, and cost-effective MEP solutions that elevate every project we take on.

OUR VISION AND AIM

We are not driven by profit alone but by purpose.

Our aim is to deliver cost-effective, high-quality MEP services that prioritize client satisfaction, safety, and long-term value.

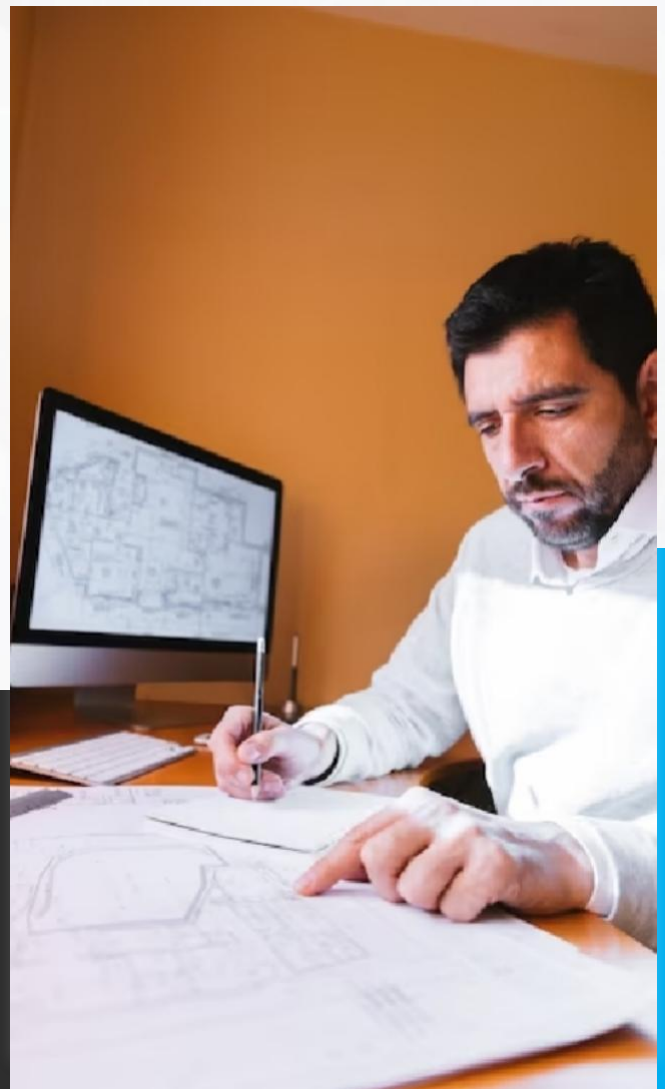
We strive to provide the best service, superior workmanship and materials that meet industry standards, all while ensuring economic feasibility for our clients.



**Transform your business with Nebulatech BBS Private Limited
because your success is our priority!**

MEP

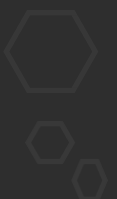
Nebulatech BBS Private Limited specializes in offering comprehensive services in the fields of mechanical, electrical, plumbing, fire fighting for both residential and commercial sectors. Our expertise spans every aspect of the electrical and mechanical domain, encompassing design, system installation, as well as maintenance and repair work. With a team of dedicated professionals, including highly qualified engineers and technical staff skilled in multiple disciplines, we are committed to delivering exceptional project management and ensuring top-notch workmanship. Throughout the project lifecycle, we adhere to strict timelines and budgetary constraints, while also extending complete after sales support.



MEP

SCOPE OF SERVICES

- 01 HVAC Design & Drafting
- 02 Electrical Design & Drafting
- 03 Plumbing Design & Drafting
- 04 Fire Fighting Design & Drafting



OUR SERVICES IN HVAC

01 Hot Water Generator/ Ultrasonic Mist Generator / Pan Humidifiers Package

Units, Dx Units. VRF/VRV Systems

02 Air-Cooled CHILLING M/Cs With Scroll/Screw Compressors

03 Water-Cooled CHILLING M/Cs With Scroll/Screw Compressors

04 Fan Coil Unit Of Various Capacities. Chilled Water Piping System

05 Chemical Flushing & 3Rd Party Testing Reports

06 Air-Cooled/ Water-Cooled Brine Chilling M/Cs

07 Kitchen Hood Exhaust And Fresh Air System

08 Air Balancing System And Certifications

09 Double Skin & Single Skin Air Washers

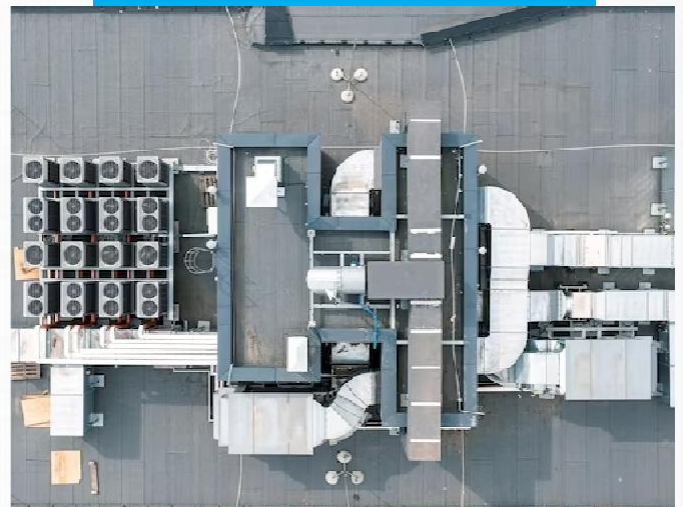
10 G.I & P.I Ducting Installation System

11 Double Skin & Single Skin Ahus

12 General Air Conditioning

13 Ventilation Systems

14 Cooling Tower



OUR SERVICES IN FIREFIGHTING

- 01 Water-Based System
- 02 Foam System
- 03 Clean Agent System
- 04 Fire Alarm System
- 05 Co2 Flooding System
- 06 Dry Powder System
- 07 Wet Chemical Extinguishing



OUR SERVICES IN PLUMBING

- 01 Sanitary & Plumbing
- 02 Sewage Treatment Plant
- 03 Water Supply System
- 04 Pump Room System
- 05 Terrace Drainage System
- 06 Swimming Pool
- 07 Space Heating
- 08 Water Softening



OUR SERVICES **IN WATER SOLUTIONS**

- 01 Effluent Treatment Plant
- 02 Sewage Treatment Plant
- 03 Water Treatment Plant
- 04 Industrial Reverse Osmosis (RO) Plant



OUR SERVICES **IN ELECTRICAL**

- 01 Internal & External Electrification
- 02 Static Transfer Switches
- 03 Compact Substations
- 04 Cabling. DG Sets
- 05 HT & LT Panels
- 06 Transformers
- 07 UPS Systems
- 08 Earthing
- 09 ATS



OUR MEP CLIENTS

Trusted By Top Brands For Reliable MEP Solutions, Tailored To Boost Performance And Efficiency.



WORLD OF HYATT®



Temple
Uganda



Ashram
at Varanasi



OSHO
Farm House

MANY MORE...

THANKYOU!

 **Head office** : Ward no-31 Choti Quazipura, Darbhanga Bihar 846004

Branch Office : D-26, Tomar Tower, Vibhuti Khand, Gomti Nagar,
Lucknow-226010-Uttar Pradesh

 **+91 950 704 3669, 920 824 3669, 920 854 3669**

 **info@nebulatechbbbspvtltd.com**

 **www.nebulatechbbbspvtltd.com**



— WWW.NEBULATECHBBSPVTLTD.COM —